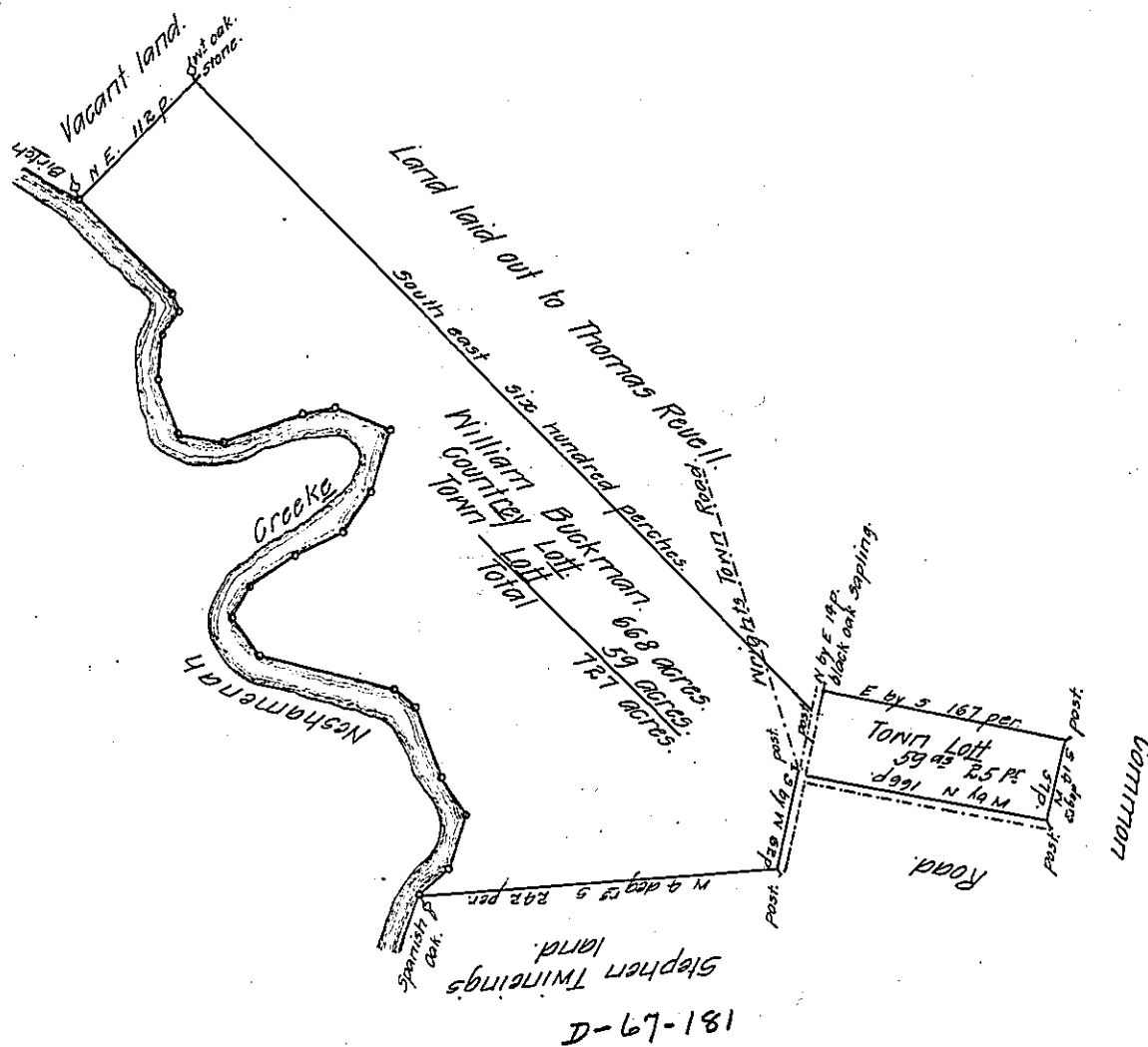


The courses of the Creek from Stephen Twineings Corner upward.

Courses	Dist in per.
N. E.	25
N 17 deg E	36
N N by W	30
N 20 W	50
N. W	80
N 16 W	94
N 35 W	32
N 30 E	25
N 52 E	36
N 65 E	36
N E by N	32
N 19 E	44
N 72 W	42
S 20 W	18
S 70 W	50
N by N	32
N N W	36
N 5 E	32
N 31 E	16
N N W	10
N. W	88



B-3-2

By virtue of a General warrant from the Proprietaries Commission to me directed bearing date the 5th of the 11th month 1702 to resurvey all such Tracts and parcels of land within the County of Bucks as maybe reasonably suspected to have been unduely surveyed when first taken up, and have not yet been rectified; Resurveyed unto William Buckman one tract laid out to John Rowland for 200 acres, and one tract laid out to Elizabeth Barber for 300 acres situate in Newtown in the same County being contiguous Beginning at a post by the Town Commission, Thence by a Road N by N 166 perches to another Road Crossing the first, Then from a post over the 3^d cross road along by the same S by W 62 perches to a post, Then by Stephen Twineings land N 4 deg¹² S 242 perches to a Spanish oak by Neshameneh Creek, Then up the several courses of the 3^d Creek to a Birch tree, Then by vacant land N.E. 112 per to a stone by a white oak being the corner of a tract laid out to Thomas Revell, Then by the 3^d Revell's land S. E six hundred perches to the 5^d cross Road, Then from a Post over the 5^d road N by E 14 perches to black oak Sapling, Then E by S 167 per to a post by the 5^d Commission, Then by the same S 14 deg¹² W 57 perches to the place of beginning, Containing 727 acres, Resurveyed the 3^d of the 2^d month 1703.

By me John Cutler

IN TESTIMONY that the above is a copy of the original remaining on file in the Department of Internal Affairs of Pennsylvania, made conformably to an Act of Assembly approved the 16th day of February, 1833, I have hereunto set my Hand and caused the Seal of said Department to be affixed at Harrisburg, this

third day of February 1911.

Henry Houch
Secretary of Internal Affairs.